



## Presentation Night



## Principals Message

Welcome home to the Vietnam Travelers. It was great to see everyone back safe and sound. Can't wait to see all the photos and hear the stories. Congratulations to Daisie Thomas, Michael O'Halloran and Jodi Stanley for their work in making this trip so successful.

Presentation Night was a great success and congratulations to all the award winners. Thank you to parents, families and local businesses for your support on the night and over the last 12 months.

Looking forward to 2012, we are currently fully staffed and we have had a number of new staff visiting the school during Term 4 in preparation for 2012.

To all staff, students and families that are leaving our school community, we wish you all the best.

To all of us who will be returning to Katherine High School in 2012, stay safe and enjoy the break. Looking forward to seeing you all next year.

Merry Christmas to one and all.  
Anne White

## School Vouchers 2012

The Back to School Payment Scheme has been established by the Northern Territory Government to help families offset the beginning of year expenses that come with providing the best education for students such as, but not limited to:

- Textbooks
- Stationery
- School uniforms
- School excursions
- Year 12 Jerseys

The \$75 voucher must be spent by the end of Term 1.

## Parent Contributions 2012

Katherine High School requests contributions from parents/guardians to enhance the educational and extracurricular programs offered to students. Financial support provided by parents plays an enabling role in providing resources that extend a school's capacity to 'add value' to students' learning.

Parents can pay their contributions of \$120 per student at the front office during school hours or in the week prior to the commencement of school from 8:00am - 3:00pm

- Mon Jan 23
- Tues Jan 24
- Wed Jan 25

## School Holiday Contacts

The School will be closed for enquiries from 23 December - 8 January. To contact the school, please email:

admin.kathehs@ntschoools.net.  
The phone answering system will be in place and checked weekly from January 9; messages can be left on 8973 8200. The front office will be open for stationery, book and uniform sales and general enquiries from:-

8:00am - 3:00pm

- Mon Jan 23
- Tues Jan 24
- Wed Jan 25

## School Reports

Katherine High School has introduced a new reporting system. If you have any questions regarding your child report please email the relevant Assistant Principal in the New Year. All student reports will be posted Friday 16 December.

## Key Dates

Christmas Holidays

- December 19

School Opening Hours

For stationery, book and uniform sales  
8:00am - 3:00pm

- Mon Jan 23
- Tues Jan 24
- Wed Jan 25

Closed:

- Thurs Jan 26 - Fri Jan 27

School resumes for students

- Tuesday January 31, 2012

School will commence with a whole school assembly. Students are to meet in the gymnasium at 8:10am Tuesday 31 January 2012



## School Contact Details

• Anne White (Principal)  
(08) 8973 8200  
anne.white@ntschoools.net

• Jodie Locke (KHS Council Chairperson)  
khs.council@ntschoools.net

### Yr's 7, 9 & 11



### Year 7 Rewards Day

December 9

The Year 7 students had a celebration day; a chance to enjoy each other's company and celebrate a great year. Students were divided into teams and chose their own names and team colours. They started with a round robin sporting competition of volleyball and dodge ball. Ms Curtayne supplied circus equipment and students got busy mastering their circus skills. In the afternoon students enjoyed Subway and a movie. A fabulous day had by all.

Jim Stewart  
Year 7 Coordinator

### Year 9 Camp

December 12-13

A fun filled excursion to Darwin to celebrate a great year for Year 9's. Activities included the Wave Pool, Museum, Art Gallery, movies and of course shopping. A full report and photos will be available on the school website by the end of Week 10.

Jen Watts  
Year 9 Coordinator

### Year 11 Camp

December 5-9

Students participated in a number of activities, such as canoeing, swimming and team-building at Lake Bennet. The group experienced some of our natural wonders in Litchfield National Park including Florence Falls, Buley Rockhole and the Termite Mounds, followed by a spectacular Jumping Crocodile Cruise on The Adelaide River. The group also travelled to Darwin, visiting the Parliament House, the Wave Pool, Casuarina Square, Fish Feeding, and a tour at Indo Pacific Marine which included dinner. The students involved had a great time.

Cara Fulwood  
Year 11 Coordinator

### Camps 2012

Criteria for camps in 2012 will be 90% attendance or better and proven high standards of behaviour.

If students are wishing to participate in Katherine High Schools trips throughout 2012 the information below may assist in your planning.

#### Year 7

Springvale Homestead  
4 days - Term 1  
Approximate cost \$60

#### Year 8

Kununurra  
4 days - Term 3  
Approximate cost \$175

#### Year 9

Canberra  
10 days - Term 3  
Approximate cost \$1,650

#### Year 10

Vietnam  
10 days - Term 4  
Approximate cost \$3,000

#### Year 11

Ningaloo  
10 days - Term 1  
Approximate cost \$1,500

#### Year 12

Cambodia  
10 days - Midyear break  
Approximate cost \$3,000  
Information provided is subject to change.

### Clontarf Awards

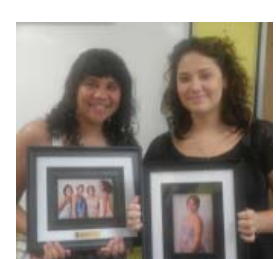
December 6

*The Clontarf Academy celebrated a great year at the Annual Presentation Night. Congratulations to all the students who received awards on the night.*

### Stronger Smarter Sisters Acknowledged

*The Stronger Smarter Sisters end-of year lunch was held to recognise students for attendance, academic achievement and leadership. A list of winners are available on the school website. Congratulations to all the students involved.*

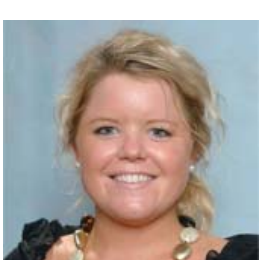
### Awards Nights





# Katherine High School

## Vietnam



## School Uniforms

The Katherine High School's compulsory School Uniform Policy requires that all students at KHS wear an authorized school uniform whilst on school premises and when attending official school activities during and after school hours.

The compulsory requirement for students to wear a school uniform is intended to address health and safety considerations, minimize clothing cost burdens for parents, promote a positive school image and eliminate social pressures on students of keeping up with fashion and brand names.

## Uniform Description

Katherine High School colours are black, blue, red and white. The school uniform consists of;

- A school collared shirt with logo
- Black shorts/pants/skirt (shorts and skirts must be longer than halfway down the thigh)
- Fully enclosed footwear. Thongs and sandals are not acceptable footwear due to OH&S issues.

Students are encouraged to wear a hat when in the sun for an extended period of time, however hats are not permitted in class.

School Uniforms can be purchased from the Front Office during school hours or in the week prior to the commencement of school from 8:00am - 3:00pm

- Mon Jan 23
- Tues Jan 24
- Wed Jan 25

School shirt with logo \$40  
Plain black shorts \$15

## Star Employee

This week's Star Employee goes to Ms Daisy Thomas for all her hard work and organisation that made the Vietnam Trip possible. Great job Daisy!

## Year 12 Information

For information on scaling scores, SATAC change of preferences and the return of student material, please log onto the schools website [www.katherinehigh.net.au](http://www.katherinehigh.net.au) or SATAC website [www.satac.edu.au](http://www.satac.edu.au)

## School Magazine

The School Magazine will be available at the beginning of the school year 2012. Please fill out the attached order form and return it to the Front Office or post it to PO Box 189 Katherine NT 0851.

## Stationery Packs

Stationery packs will be available to purchase from the front office.

The packs include :-

- blue pen
- red pen
- pencil
- eraser
- ruler
- 3x A4 ruled books
- 1x graph book
- 1x 2/3 ruled book

The cost of each pack is \$5.00.

## Vietnam

Students and Staff have returned home safely from Vietnam. Everyone had a great time and it was a great experience. A full report will be available in the New Year. Thank you for all the support given to make this trip possible.

Daisy Thomas  
Year 10 Coordinator

## House Fire Support

Rae Brown would like to thank all staff and students of Katherine High School and the wider community who have supported her and her family over the past couple of weeks. People's kindness after the house fire has been greatly appreciated.

## Vietnam

